

ZEW IN BRIEF

// KEY INFORMATION AT A GLANCE




EXECUTIVE DIRECTORS

- ◆ Prof. Achim Wambach, PhD
President (Science and Research)
E-mail achim.wambach@zew.de
Executive Assistant: Kaja von Campenhausen
E-mail kaja.voncampenhausen@zew.de
Phone +49 6 21 12 35-101, -100

- ◆ Thomas Kohl
Director (Business and Administration)
E-mail thomas.kohl@zew.de
Executive Assistant: Kathia Riedling
E-mail kathia.riedling@zew.de
Phone +49 6 21 12 35-112, -111

Address:

Centre for European Economic Research (ZEW)

L 7, 1 · 68161 Mannheim · Germany

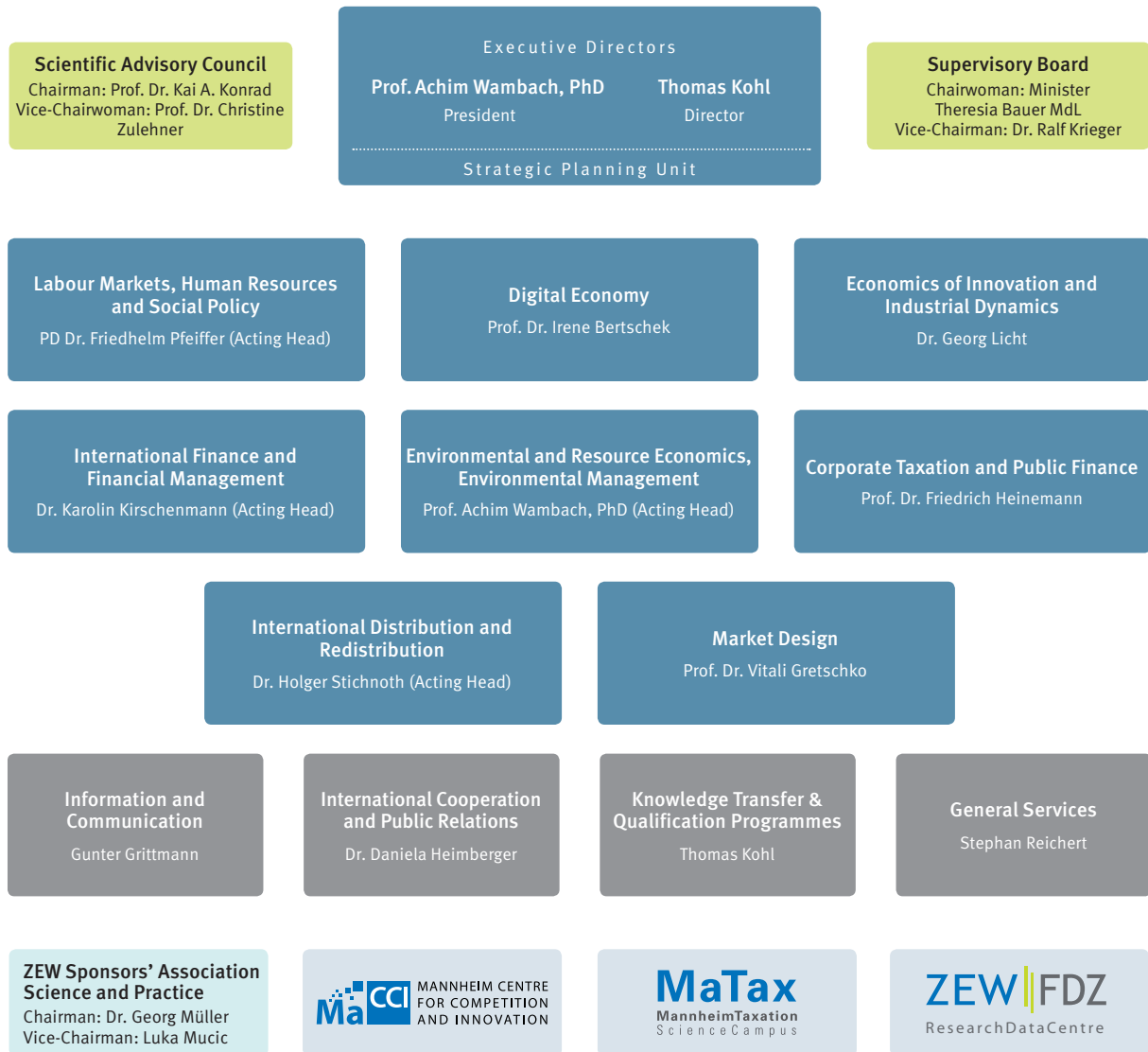
Postal address:

P.O. Box 10 34 43 · 68034 Mannheim · Germany

Phone +49 6 21 12 35-01

E-mail info@zew.de

Internet www.zew.eu



// RESEARCH

- **Research Department**
Labour Markets, Human Resources and Social Policy 4
Acting Head of Unit: PD Dr. Friedhelm Pfeiffer
Phone +49 621 12 35-150 · E-mail friedhelm.pfeiffer@zew.de
 - **Research Department**
Digital Economy 4
Head of Unit: Prof. Dr. Irene Bertschek
Phone +49 621 12 35-178 · E-mail irene.bertschek@zew.de
 - **Research Department**
Economics of Innovation and Industrial Dynamics 5
Head of Unit: Dr. Georg Licht
Phone +49 621 12 35-177 · E-mail georg.licht@zew.de
 - **Research Department**
International Finance and Financial Management 5
Acting Head of Unit: Dr. Karolin Kirschenmann
Phone +49 621 12 35-351 · E-mail karolin.kirschenmann@zew.de
 - **Research Department**
Environmental and Resource Economics, Environmental Management 6
Acting Head of Unit: Prof. Achim Wambach, PhD
Phone +49 621 12 35-100 · E-mail achim.wambach@zew.de
 - **Research Department**
Corporate Taxation and Public Finance 6
Head of Unit: Prof. Dr. Friedrich Heinemann
Phone +49 621 12 35-149 · E-mail friedrich.heinemann@zew.de
 - **Research Group**
International Distribution and Redistribution 7
Acting Head of Unit: Dr. Holger Stichnoth
Phone +49 621 12 35-362 · E-mail holger.stichnoth@zew.de
 - **Research Group**
Market Design 7
Head of Unit: Prof. Dr. Vitali Gretschko
Phone +49 621 12 35-310 · E-mail vitali.gretschko@zew.de
 - **MaCCI/MaTax** 8
 - **Leibniz Research Alliances** 9
 - **ZEW Research Data Centre/ZEW Databases** 9/10
 - **SEEK/Visiting Researchers Programme** 11
 - **Scientific Events** 12
 - **Publications** 13
-

// SERVICE

- Career Opportunities** 14
Contact: Doris Brettar
Phone +49 621 12 35-250 · E-mail doris.brettar@zew.de
- Knowledge Transfer & Qualification Programmes** 15
Contact: Barbara Hey
Phone +49 621 12 35-244 · E-mail barbara.hey@zew.de
- Press** 16
Contact: Gunter Grittmann
Phone +49 621 12 35-132 · E-mail gunter.grittmann@zew.de
- Public Relations** 16
Contact: Dr. Daniela Heimberger
Phone +49 621 12 35-109 · E-mail daniela.heimberger@zew.de



The executive directors of ZEW:
Professor Achim Wambach, PhD and Thomas Kohl

THE INSTITUTE

The Centre for European Economic Research (ZEW) in Mannheim is an independent, non-profit research institute under the legal form of a limited liability company (GmbH). Founded in 1991, ZEW is one of Europe's leading research institutes in economics and enjoys a strong international reputation. ZEW is a member of the Leibniz Association, a network of outstanding research institutes in Germany.

ZEW pursues the four key objectives:

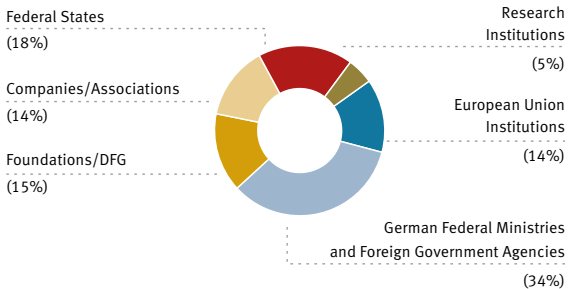
- to conduct research of the highest quality,
- to provide science-based economic policy advice,
- to train talented economist,
- to inform the professional and lay public.

ZEW's principal mission is to study and design well-performing markets and institutions in Europe. The institute's research profile is characterised by theoretically grounded methodologies in empirical economics.

Headed by Professor Achim Wambach, the president of the institute, and Thomas Kohl, the institute's director, ZEW currently employs a staff of approximately 170, distributed across six research departments, two research groups, and four service departments.

Funding

ZEW receives basic funding from the State of Baden-Württemberg and the Federal Ministry for Economic Affairs and Energy. Competing with other institutes, ZEW obtains third-party funding through commissioned research projects.



Sources of third-party funding in 2017

Shareholder and Supervisory Board

The sole shareholder of ZEW is the State of Baden-Württemberg. The Supervisory Board consists of eleven members. Theresia Bauer MdL, Baden-Württemberg's Minister of Science, Research and the Arts, chairs the Supervisory Board.

Scientific Advisory Council

A Scientific Advisory Council with representatives from the worlds of academia and business has the task of evaluating ZEW's work. The council is chaired by Professor Kai A. Konrad, Director at the Max Planck Institute for Tax Law and Public Finance in Munich.

ZEW Sponsors' Association for Science and Practice

The ZEW Sponsors' Association for Science and Practice supports ZEW's work. The members of this association include about 150 firms and personalities, who ensure a continuing exchange between the domains of research and entrepreneurial practice. Dr. Georg Müller, chief executive at MVV Energie AG, chairs the association. For further information, please visit our website at: www.zew.eu → About ZEW → Sponsors' Association.

Labour Markets, Human Resources and Social Policy

The Research Department “**Labour Markets, Human Resources and Social Policy**” investigates how labour market institutions and working conditions in firms may facilitate the development of smart, sustainable and inclusive labour markets in Europe. The Research Department offers scientifically rigorous policy advice on the design of efficient labour market, education and family policies.

Research Areas

- Inclusive Labour Markets
- Labour Markets in Organisations
- Education and Labour Market Entry
- Changing Labour Markets

Digital Economy

The Research Department “**Digital Economy**” studies the impact of digitalisation on economic processes. It investigates changes in production, innovation, and the working world brought about by digitalisation, as well as digital markets and platforms.

Research Areas

- Diffusion of Digital Technologies
- Digitalisation and Corporate Strategies
- Digital Markets and Platforms



Acting Head: PD Dr. Friedhelm Pfeiffer
Labour Markets, Human Resources
and Social Policy



Head: Prof. Dr. Irene Bertschek
Digital Economy

Economics of Innovation and Industrial Dynamics

The Research Department “**Economics of Innovation and Industrial Dynamics**” investigates the behaviour of firms under dynamic market conditions. It identifies the challenges faced by firms and economic policymakers as a consequence of the European and global economic integration, and proposes new courses of action.

Research Areas

- Innovation Processes in Firms
- Intellectual Property Rights and Intangible Investments
- Industry-Science Linkages and Technology Transfer
- Foundation, Growth and Survival of Firms
- Competition and Regulation
- ZEW Research Data Centre

International Finance and Financial Management

Focusing on topics that will inform the structure of European financial markets, the Research Department “**International Finance and Financial Management**” carries out empirical research to provide regulators and policymakers with evidence-based policy advice to help balance financial stability with economic growth.

Research Areas

- Bank Management and Financial Regulation
- Financial Intermediation and the Competitive Landscape
- Household Finance and Real Estate



Head: Dr. Georg Licht
Economics of Innovation and
Industrial Dynamics



Acting Head: Dr. Karolin Kirschenmann
International Finance
and Financial Management

Environmental and Resource Economics, Environmental Management

The Research Department “**Environmental and Resource Economics, Environmental Management**” investigates the optimal function of markets and institutions in regard to environmental aspects and resource scarcity. A key focus is European energy and climate policy.

Research Areas

- Energy Economics and Mobility
- International Environmental and Resource Policies
- Innovation and Sustainable Development
- Macroeconomic Analysis of Environmentally Relevant Policies

Corporate Taxation and Public Finance

The Research Department “**Corporate Taxation and Public Finance**” addresses questions related to corporate taxation and empirical public economics within the broader context of economic integration. The key research question concerns the impact of high international mobility on sustainable tax and financial policy.

Research Areas

- Corporate Taxation and Tax Location Analysis
- Empirical Effects of Corporate Taxation
- Decision-Making in Tax and Financial Policy
- Fiscal Policy, Fiscal Federalism and Economic Performance



Acting Head:
Prof. Achim Wambach, PhD
Environmental and Resource Economics,
Environmental Management



Head: Prof. Dr. Friedrich Heinemann
Corporate Taxation and
Public Finance

International Distribution and Redistribution

The Research Group “**International Distribution and Redistribution**” investigates the distribution of income and wealth as well as other indicators of inclusion and equal opportunity. The Research Group also studies the effects of taxes and social transfers, taking behavioural adjustments into account.

Research Areas

- Income and Wealth Distribution
- Tax and Transfer Policy
- Fiscal Policy and Redistribution in Europe

Market Design

The Research Group “**Market Design**” focuses on the analysis and optimisation of markets. Its aim is to improve the performance of existing markets by actively shaping market rules. To this end, it examines the peculiarities of each market and identifies their prevailing modes of action.

Research Areas

- Auction Market Design
- Design of Matching Markets



Acting Head: Dr. Holger Stichnoth
International Distribution
and Redistribution



Head: Prof. Dr. Vitali Gretschko
Market Design

MaCCI

The “**Mannheim Centre for Competition and Innovation**” (MaCCI) Leibniz ScienceCampus is a joint initiative of ZEW and the School of Law and Economics of the University of Mannheim. The major objective of MaCCI is to stimulate and disseminate interdisciplinary research in the areas of competition, regulation, and innovation. MaCCI conferences provide a platform for discussion between academic researchers and practitioners, as well as for interdisciplinary discourse between law and economics.



Board of Directors: Professor Irene Bertschek (ZEW), Professor Thomas Fetzer (University of Mannheim), Professor Martin Peitz (University of Mannheim), Professor Achim Wambach (ZEW)

Coordination: Dr. Georg Licht (georg.licht@zew.de)

More information: www.macci.eu

MaTax

The main objective of the “**MannheimTaxation**” (MaTax) Leibniz ScienceCampus is to foster high-quality research in the broad field of taxation. It serves as a platform for the dissemination of results from research on taxation and as a forum for the scientific community and policymakers to discuss fiscal topics. MaTax is a joint initiative of ZEW and the University of Mannheim.



Board of Directors: Professor Thomas Fetzer (University of Mannheim), Professor Friedrich Heinemann (ZEW), Professor Christoph Spengel (University of Mannheim), Professor Johannes Voget (University of Mannheim), Professor Achim Wambach (ZEW)

Coordination: Dr. Philipp Dörrenberg, Professor Katharina Nicolay (MaTax@zew.de)

More information: www.matax.eu

Leibniz Research Alliances

To address current scientific and socially relevant issues, Leibniz institutions form collaborative research alliances. ZEW plays an active part in five of these Leibniz research alliances, which use inter- and transdisciplinary approaches to face complex social challenges.

- Crises in a Globalised World
- Educational Potentials: Leibniz Education Research Network (LERN)
- Energy Transition
- Healthy Ageing
- Science 2.0

For further information, please visit:

www.zew.eu → Research → Leibniz Research Alliances

ZEW Research Data Centre

The ZEW Research Data Centre (ZEW-FDZ) grants external researchers access to ZEW original data. The ZEW-FDZ primarily provides micro-level data from ZEW firm surveys on topics such as innovation activity, the development of start-ups, and the use of information and communication technologies. Available datasets also include ZEW expert surveys and individual-level surveys. All use of ZEW data is free of charge and limited to scientific, non-commercial research.



The ZEW-FDZ closely collaborates with the German Statistical Office's research data centre which established workplaces at ZEW for both internal and external researchers to access confidential micro-data gathered by the various statistical offices in Germany.

Contact: Dr. Sandra Gottschalk (sandra.gottschalk@zew.de)

More information on www.zew.de/zew-fdz-en

ZEW Databases

Business Survey in the Information Economy

Quarterly survey of firms in the ICT hardware sector, ICT service providers, media service and knowledge-intensive service providers regarding the current business situation and expected development
Contact: Dr. Daniel Erdsiek (daniel.erdziek@zew.de)

IAB/ZEW Start-up Panel

Database containing information on business start-ups allowing analysis of their development during the first years of operation
Contact: Jürgen Egelin (juergen.egeln@zew.de)

Mannheim Enterprise Panel (MEP)

Data on firms that are, or were, economically active in Germany allowing analysis of start-ups, company growth, firm closures and firm population
Contact: Dr. Johannes Bersch (johannes.bersch@zew.de)

Mannheim Innovation Panel (MIP)

Database concerning the innovation activities of companies in Germany, collected on the basis of an annual company survey
Contact: Dr. Christian Rammer (christian.rammer@zew.de)

ZEW Financial Market Survey

Monthly survey of experts providing expectation data on financial market trends as well as macroeconomic developments
Contact: Dr. Michael Schröder (michael.schroeder@zew.de)



Strengthening Efficiency and Competitiveness in the European Knowledge Economies (SEEK)

The SEEK research programme is enabling ZEW to further establish its position in the international research landscape. Financed by the State of Baden-Württemberg since 2010, the programme contributes to a better



understanding of the economic challenges facing the European Union and its Member States. Current SEEK projects are focused on:

- Options for Effective Fiscal and Economic Governance in the Eurozone – European Network on Better Institutions
- Digital Marketplaces and Platforms
- Regional Inequalities in Living Standards in View of Fiscal and Labour Market Policies

Research projects are carried out at ZEW in close cooperation with international researchers.

Further information: <http://seek.zew.eu>

Contact: Dr. Daniela Heimberger (daniela.heimberger@zew.de)

ZEW Visiting Researchers Programme (VRP)

ZEW offers outstanding opportunities to conduct research in an inspiring environment. The Visiting Researchers Programme invites established as well as up-and-coming economists to



complete research stays at ZEW. Visiting researchers closely collaborate with their colleagues at ZEW. They are involved in research projects and daily academic life, attend workshops and conferences, and make use of the infrastructure at ZEW to conduct their own research. Many research visits at ZEW have yielded long-term scientific cooperation.

Applications for visiting researcher positions are more than welcome. For further information please visit our website at: www.zew.de/en/karriere/visiting-researchers

Contact: Dr. Daniela Heimberger (daniela.heimberger@zew.de)

Scientific Events

• ZEW Lectures on Economic Policy

This seminar series promotes a regular exchange between ZEW researchers and scholars from other scientific institutions. Lectures within this series address current challenges in economic policy.

• ZEW Research Seminar

In this weekly seminar, ZEW researchers as well as external lecturers provide an overview of recent developments in selected research areas.

• ZEW Summer Workshop

At this annual summer workshop, talented young economists present their research work in empirical economics. The best paper presented at the workshop is honoured with the Heinz König Young Scholar Award.

ZEW hosts a large number of conferences and workshops on specific research topics each year. More information at: www.zew.eu → Events

The logo for ZEW (Zentrum für Europäische Wirtschaftsforschung) is displayed in large, bold, blue capital letters.

Zentrum für Europäische Wirtschaftsforschung
Centre for European Economic Research
www.zew.eu · www.zew.de

SCIENCE
RESEARCH IN ECONOMICS

Publications

ZEW Discussion Papers

The series includes papers on all fields of research addressed at ZEW; many contributions are published in refereed journals.

ZEW policy briefs

Short publications on a specific topic which provide a concise overview of research results of practical relevance for policy making and administration

ZEW Research Reports (in German only unless stated otherwise)

- **DIFI Report (German Real Estate Finance Index)**
Quarterly survey of experts in the German real estate market regarding trends in real estate financing over the coming six months; conducted in cooperation with Jones Lang LaSalle
- **Junge Unternehmen (Young Firms)**
The biannual publication by ZEW and Creditreform features analyses and research results concerning start-up activities in Germany and the development of young firms.
- **M&A Report**
Biannual reports in German and English on current topics and developments in global mergers and acquisitions on the basis of the Zephyr database; issued in collaboration with Bureau van Dijk
- **ZEW Financial Market Report**
Regular reports on the results of the ZEW Financial Market Test
- **ZEW Sector Report for the Information Economy**
Quarterly reports on the business situation in the information economy (ICT and media sectors, ICT-intensive service providers)
- **ZEW Sector Report on Innovation**
Annual reports on innovation activities in selected sectors of the manufacturing and service industries

Career Opportunities at ZEW

About half of ZEW's research staff are working on their doctoral thesis, contributing to a vibrant research dynamic at the institute. The topic of each thesis is typically closely related to the research projects each candidate is involved in. Based on the field of research chosen, ZEW supports candidates in finding a suitable university and supervisor for their doctoral studies.

Why Choose ZEW?

Offering continuous training in applied economic research and an in-depth understanding of economic theory, ZEW provides its researchers with a high-quality post-graduate education. The certificates to be obtained in doctoral courses at universities and in the mandatory, optional and accompanying courses at ZEW as well as any further content required in order to complete a doctoral programme at ZEW are set out in the "Standards for Structured Doctoral Studies".

Postdoctoral Opportunities

Postdoctoral scholars at ZEW are responsible for carrying out research and policy advising projects in collaboration with unit heads. The institute benefits hugely from the knowledge and experience of long-term staff. Joining ZEW includes the possibility of flexible work arrangements which facilitate a healthy balance between work and family life.

PhD Programme by ZEW and the University of Mannheim

The ZEW PhD programme is run in collaboration with the Center for Doctoral Studies in Economics (CDSE), and offers promising economists the opportunity to pursue their doctoral studies in the inspiring research environment of two leading institutions. Based at the University of Mannheim, the first year is comprised of core, compulsory courses. This is followed by a year of elective courses, held across both institutions, a research phase, and then finally the doctoral thesis.

ZEW DocNet

The ZEW DocNet is an international network that links ZEW with graduate programmes at the universities of Konstanz (DE), Mannheim (DE), Maastricht (NL), Leuven (BE), St. Gallen (CH) and Luxembourg (LU). Doctoral students who choose to participate in the programme pursue their project work at ZEW either on a part-time or a full-time basis, depending on the individual workload. For more information, see our website at www.zew.eu/zewdocnet.



Contact: Doris Brettar (doris.brettar@zew.de)

Knowledge Transfer & Qualification Programmes

ZEW's specialised department for professional training develops and organises seminars for various target groups. Close cooperation between the department's training experts, ZEW researchers and experienced external practitioners provides the basis for scientifically grounded training seminars that have practical relevance.

• Expert Seminars

Together with the individual ZEW research units and external experts, the department devises new training events for both researchers and executive staff. The focus of this training is on the application and communication of statistical and econometric methods as well as general economic contexts. ZEW's training experts also offer a number of successful seminars for researchers on the acquisition of "soft skills".

• Inhouse Seminars

ZEW offers tailor-made training for companies and institutions. The institute's education experts develop specific seminars, training courses, and events in German and English in close consultation with the department's clients. The ZEW training experts draw on the knowledge and experience of the institute's staff and on excellent external contributors.

• International Qualification Programme

Alongside expert seminars and training for companies and institutions, ZEW also offers longer-term international qualification programmes. The according workshops, further education courses, summer schools and tailored training sessions are held in English and take place in Germany and abroad. The Service Department has particular expertise for Asia.



Head: Thomas Kohl
Knowledge Transfer & Qualification
Programmes



Deputy Head: Barbara Hey
Knowledge Transfer & Qualification
Programmes

Press and Public Relations

Excellent research and economic policy advice deserve to be widely recognised in the areas of politics, business, and society. ZEW has two service departments whose focus is on the creation and maintenance of ZEW's external relations with the media, cooperation partners, and the public. Press releases, publications and events spread research results and contribute to economic policy debates. The departments' printed and electronic media play an important role in ZEW's international reputation.

- **ZEWnews English Edition**

Overview of research results, reports on major events and conferences, interviews and opinion pieces on economic policy; supplements: M&A Report, Europe

- **ZEW Annual Report**

Resume of events, achievements, projects, and the research performance in the year under report

- **ZEW Newsletter English Edition**

Monthly comprehensive overview of news, forthcoming events, and job offers at ZEW

To subscribe, please send an e-mail to newsletter-en@zew.de

- **ZEW websites: www.zew.de/www.zew.eu**

Press releases, comments, events, calls for papers, job offers, and much more

Contact: Gunter Grittmann (gunter.grittmann@zew.de)



Head: Gunter Grittmann
Press Relations and Editing



Head: Dr. Daniela Heimberger
International Cooperation and
Public Relations

Selected speakers at ZEW events: Dr. Angela Merkel (Chancellor of Germany), Dr. Jens Weidmann (President of the Deutsche Bundesbank), Carlos Moedas (EU Commissioner for Research, Science and Innovation), Professor Hal Varian (Google and UC Berkeley)



ZEW EVENTS

ZEW regularly invites renowned personalities from the realms of politics, civil society, and academia to give a lecture and discuss current economic policy challenges.

• First-Hand Information on Economic Policy

Series of lectures at ZEW in Mannheim featuring top-level speakers from the areas of politics, business, and academia on current economic and fiscal policy topics

• ZEW Lunch Debates

Brussels-based series of discussions on current economic challenges in Europe featuring international speakers from research and EU institutions

Contact: Dr. Daniela Heimberger (daniela.heimberger@zew.de)

Imprint

Publisher Centre for European Economic Research (ZEW), Mannheim

Editor Sarah Tiedemann, ZEW

Layout Media Design, ZEW

Photos Borchard/A.Loeffler, Erich Dichiser, EU, FKPH, iStockphoto, privat, ZEW

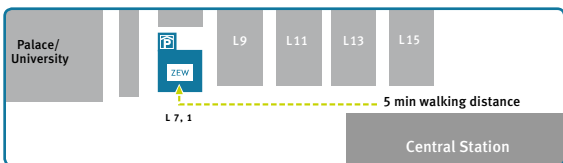
Last Edit August 2018



Travelling by plane via Frankfurt International Airport

It is a 30-minute journey from Frankfurt International Airport to Mannheim Central Station via ICE high-speed train.

Travel time to Frankfurt by plane (non-stop): from New York: approx. 8 hrs/ from Beijing: approx. 10 hrs



It is a five-minute walk (300 m) from Mannheim Central Station to ZEW.

ZEW
 Zentrum für Europäische
 Wirtschaftsforschung GmbH
 Centre for European
 Economic Research

L 7, 1 · 68161 Mannheim · Germany
 P.O. Box 10 34 43 · 68034 Mannheim · Germany
 Phone +49 621 1235-01
 E-mail info@zew.de
 Internet www.zew.eu



TOTAL E-QUALITY recognises organisations that have implemented an equal opportunities policy.